

SMITH TIMES

Friday, November 15, 2013

Volume 22, Number 12

The Principal's Corner

Report cards will be distributed to students today, as the first trimester of the year comes to a close. If you do not receive one for your child, please contact the school.

Math Night is next Thursday from 6:30-7:30 p.m. Please plan to join us for this night of educational fun for the whole family!



Food Pantry
Donations Needed

Our school's Full Bag Pantry begins next week. The pantry provides families with needed food support with donations of nonperishable food. Please request a bag of food by

Wednesday and pick it up on

Fridays. Bags will be available for pick up in the main office. (Your child may bring the bag home if that is indicated on the form you complete in the newsletter or from information we receive from you by email.) Please email Ms. Sarah Minkler at sminkler@bsdvt.org or Mrs. Penne Wheeler at pwheeler@bsdvt.org to request a bag of food each Friday.

Cold weather is now upon us. Please feel free to help yourself to the winter clothing on the rack by the front door if your family members need it. If you have usable items (especially coats) in good condition and wish to donate them, please feel free to leave these items at the office. We clean all items before we place them on the rack for distribution. Hats and mittens are also available, thanks to the generosity of a few area charitable organizations.

If you or someone you know is interested in having Thanksgiving Day meals delivered to you, please contact me at the school: 864-8479 or tfleury@bsdvt.org, and I will send your name on to St. Marks's Church and the North Avenue Alliance Church, who are again co-sponsoring a Thanksgiving Day meals program. The N.A.A.C. is hosting the sit-down dinner from 12:00-2:00 p.m. that day, and volunteers from both churches will deliver meals to your home if you prefer. All I

need is your name, address, telephone number, and how many meals you are requesting, and I will forward that information to the churches.

Speaking of holidays, our school is once again collecting donations of new toys as part of the Toys for Kids program, which collects new, unwrapped toys for children who need them. If you wish to donate, please place items in the bin for this purpose in the main office.

A total of 108 postcards have been mailed on behalf of students who are respectful, responsible, and safe learners. We seek ways to recognize positive student behavior in order to reinforce it.

Thank you for all you do to make our school a community of respectful, responsible, and safe learners.

Calendar of Events



11/15: Report Cards Distributed to Students

11/15: Holiday Wreath Fundraiser Ends

11/21: Math Night (6:30-7:30 p.m.)

11/22: Full Bag Pantry Begins

11/27-11/29: Thanksgiving Holiday.
(No School).

12/9: Kids Only Shopping Extravaganza

12/11: P.T.O. Meeting (6:30-8:00 p.m.)

12/13: Celebrations Around the World
Performance (1:30-2:30 p.m.)

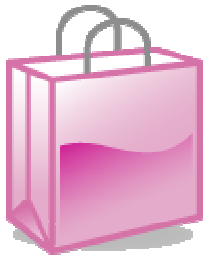
12/20: Last Day of School Before Holiday
Vacation

News from the Guidance Office (by Kate Guilmette)

We are coming to the end of the bullying unit in classroom guidance. This year we have spent some time talking about mean behaviors and when they turn into bullying. Bullying is intentional and repeats over time, another element to consider is the effect that the behavior has on the target and others. Does the behavior interfere with a child's ability to learn and have fun at school? If yes, then it may be bullying. Mr. Fleury and I are the designated employees at CP Smith. This means that we are responsible for investigating allegations of bullying and harassment. We follow district protocol that requires us to do an in-take to determine whether bullying or harassment has taken place.

This year in classroom guidance I am presenting all students with the Stop/Walk/Talk approach to stop bullying. This approach is easy for students to remember and supports other, more specific, strategies they have used in the past. In most classes we have been role playing to give students a chance to practice this approach in a non-threatening situation. At the conclusion of this unit we will be moving into looking at differences between us, that are specific to the protected characteristics of harassment. More on this next week. As always please be in touch with any questions or concerns.

Attention All Smith Families



Our Kids Only, Shopping Extravaganza is Mon, Dec 9th.

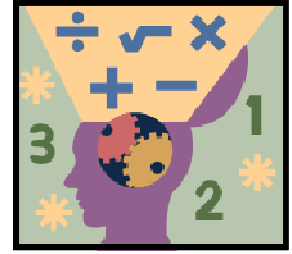
We need donated items ASAP! Please bring your donations to the office. Items will be accepted for the sale until

Friday, Dec 6th. We also need volunteers for the event on Dec 9th. Please see the sign-up sheet in the office or contact one of us.

Nadeen St-Pierre 860-5126
Karen Ruben 315-369-8966

Thanks so much for your help!!

Save the Date for C.P. Smith Math Night Thursday, November 21, 6:30pm - 7:30pm



Join us for a family-oriented evening of fun for all ages. Math Night features a number of stations, run by teacher, parent, and student volunteers. Each station focuses on a game, puzzle, or other activity that celebrates mathematics.

This is also a call for people to help make the night a success! Run a math station, help greet visitors, or just bring the family. To volunteer, sign up at <http://bit.ly/17XKJRM> [Math Night Volunteer Sign Up](#), or contact parents Neil & Tiffany Delaney (tiffany.delaney@uvm.edu) or 651-0182 for more information.

Your Holiday Shopping Can Earn C.P. Smith Money

Did you know you can earn money for C.P. Smith just by shopping sites you already shop? There are two easy ways:



The first is through **Amazon.com**. If you access the Amazon site through the PTO blog then any purchases made will have a percentage of the purchase go straight to the PTO. You have to access the site through the blog each time.

The second way is through “**e BoxTops**”. There are over 400 stores included in this site, such as, expedia, Gap, iTunes, etc. You just need to enroll. Again, you can access the site through the PTO blog. It's easy! Planning a vacation? Try making reservations through this site. These funds are used to support extra events and programs at Smith!